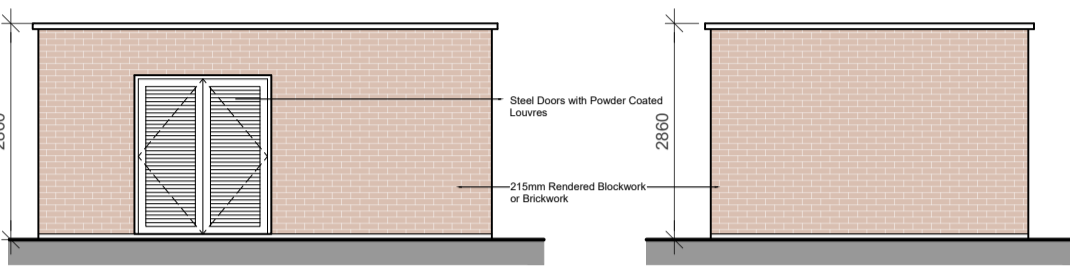
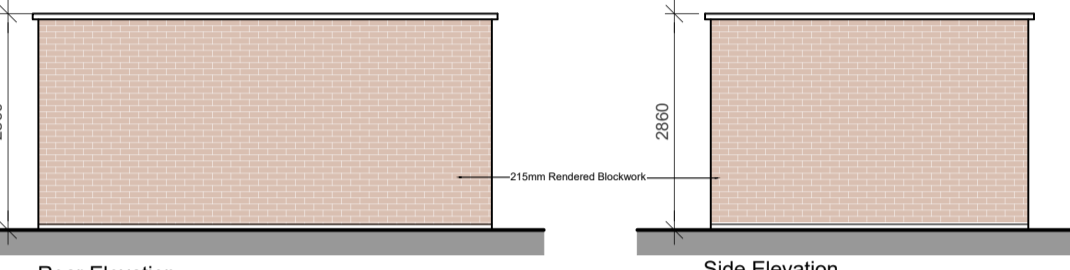


Bin Store Floor Plan



Front Elevation

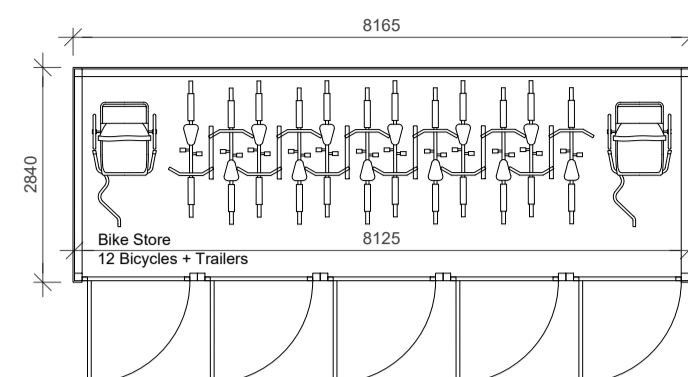
Side Elevation



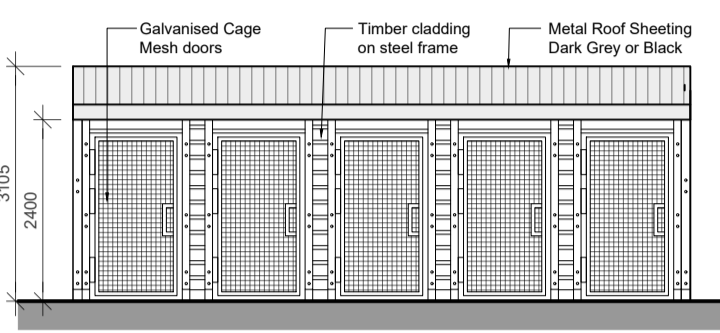
Rear Elevation

Side Elevation

DUPLEX BLOCK A EXTERNAL - BIN STORE

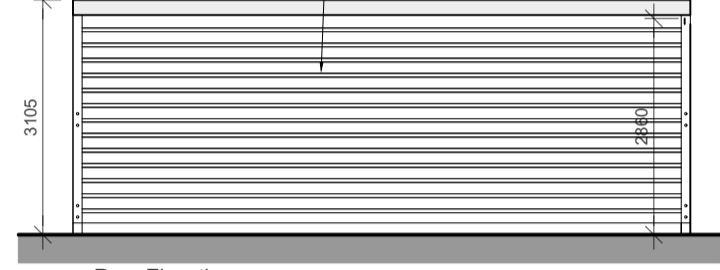


Bike Store Floor Plan



Front Elevation

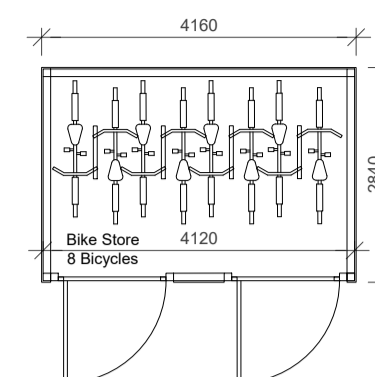
Side Elevation



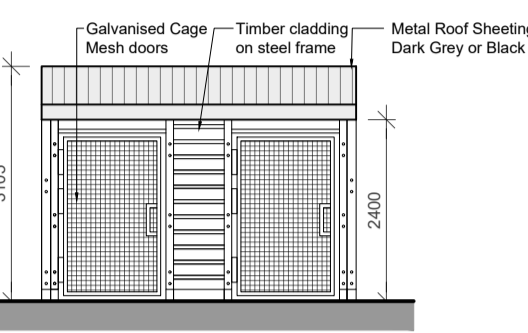
Rear Elevation

Side Elevation

DUPLEX BLOCK A EXTERNAL - BIKE STORES

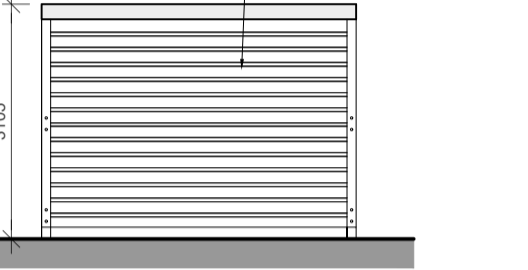


Bike Store Floor Plan



Front Elevation

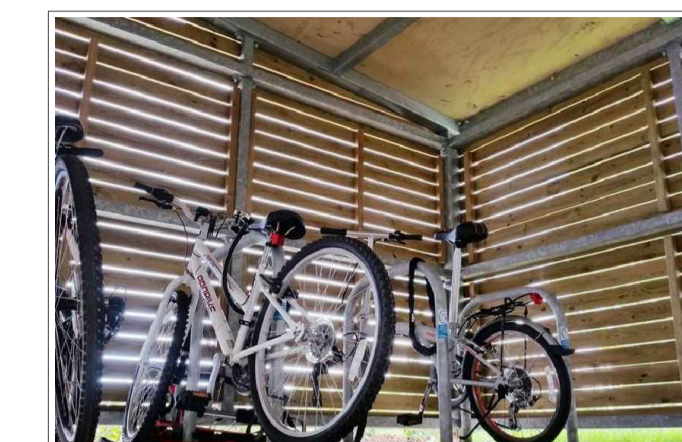
Side Elevation



Rear Elevation

Side Elevation

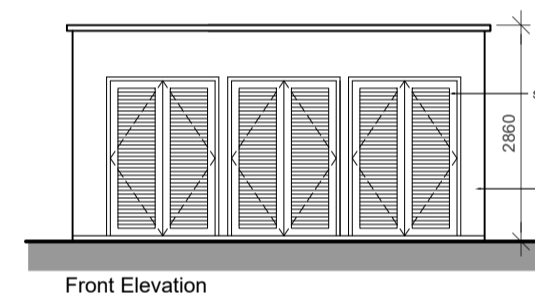
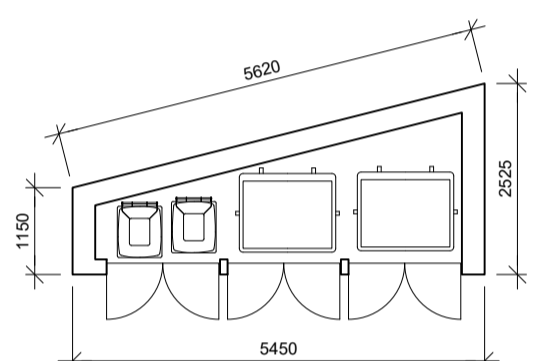
DUPLEX BLOCK A EXTERNAL - BIKE STORES



TYPICAL IMAGE of similar SHOWING MATERIALITY

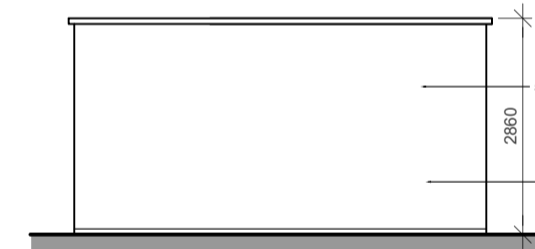


TYPICAL IMAGE of similar SHOWING MATERIALITY



Front Elevation

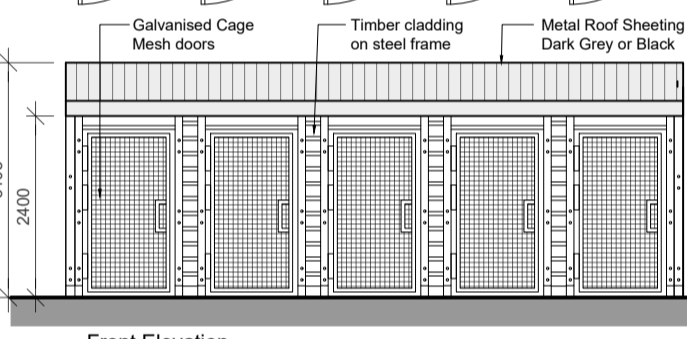
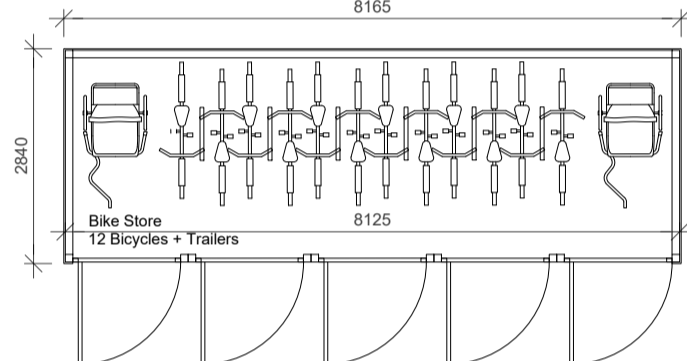
Side Elevation



Rear Elevation

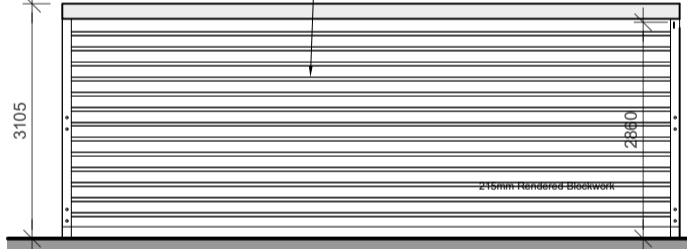
Side Elevation

DUPLEX BLOCK B EXTERNAL - BIN STORE



Front Elevation

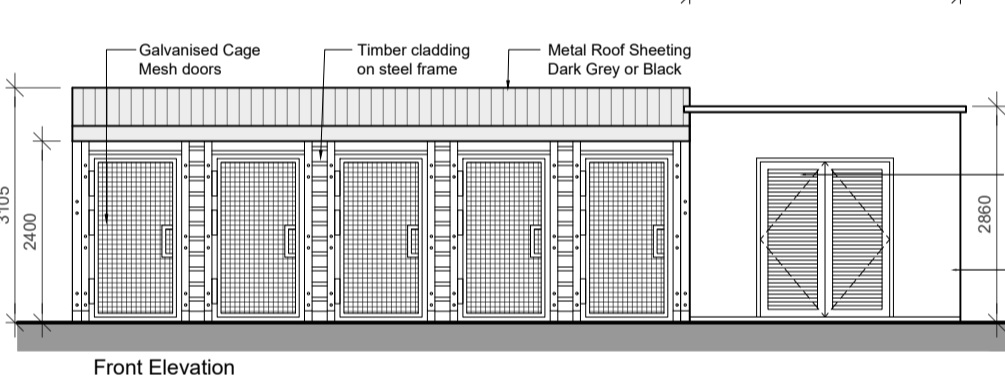
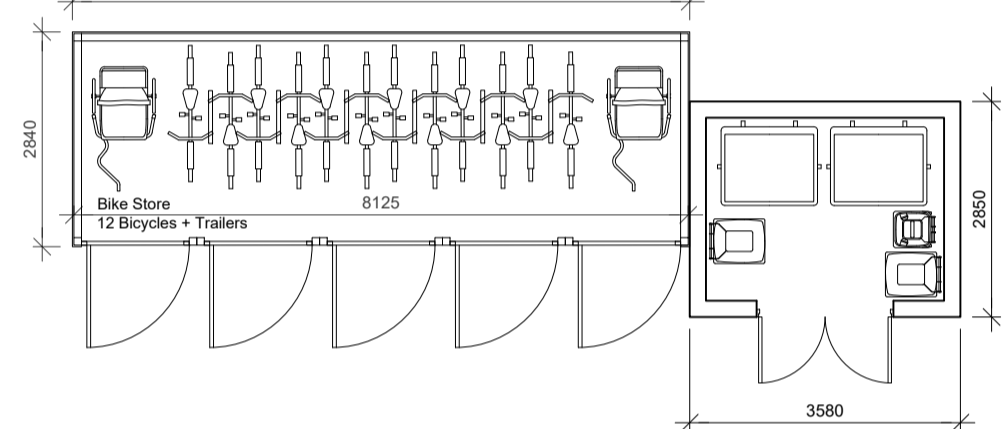
Side Elevation



Rear Elevation

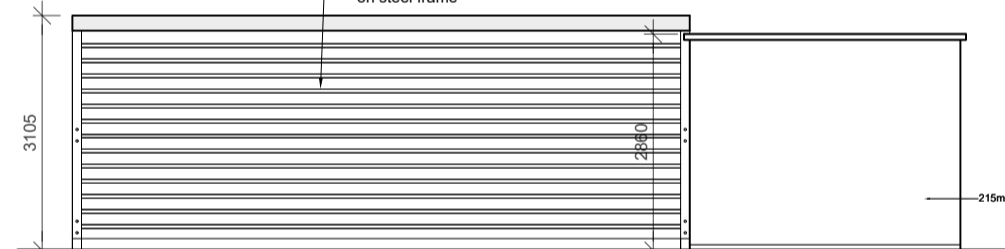
Side Elevation

DUPLEX BLOCK B EXTERNAL - BIKE STORE



Front Elevation

Side Elevation



Rear Elevation

Side Elevation

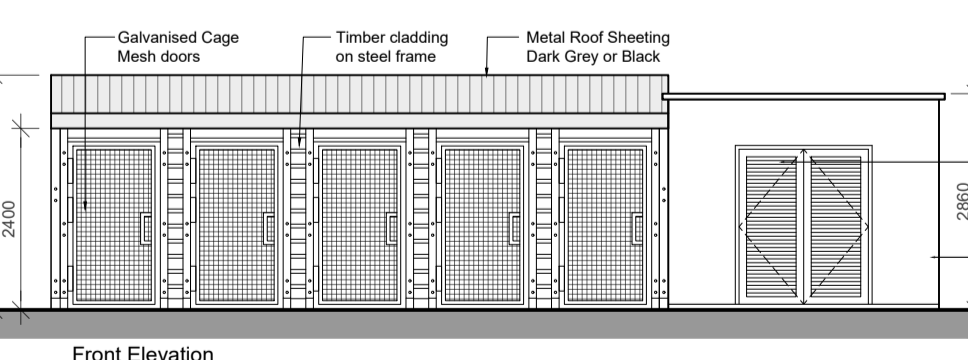
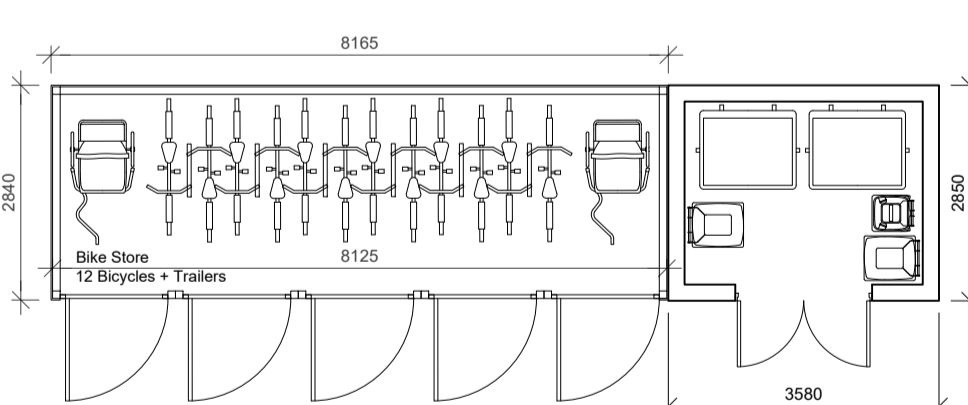
DUPLEX BLOCK E EXTERNAL - BINS & BIKE STORE



TYPICAL IMAGE of similar SHOWING MATERIALITY

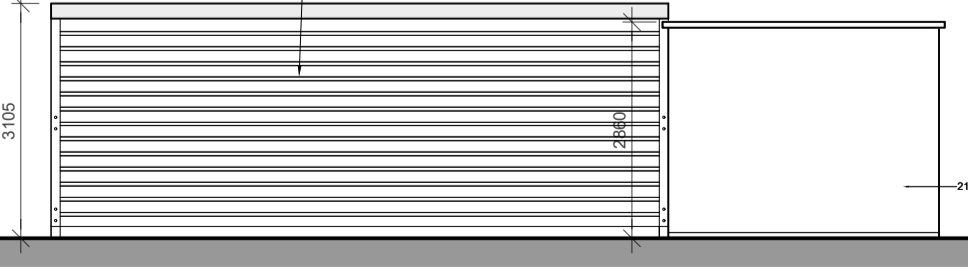


TYPICAL IMAGE of similar SHOWING MATERIALITY



Front Elevation

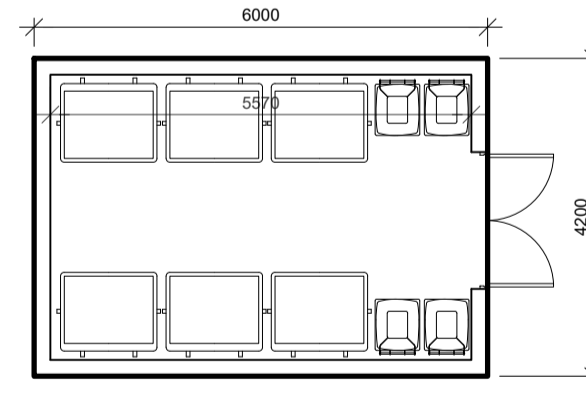
Side Elevation



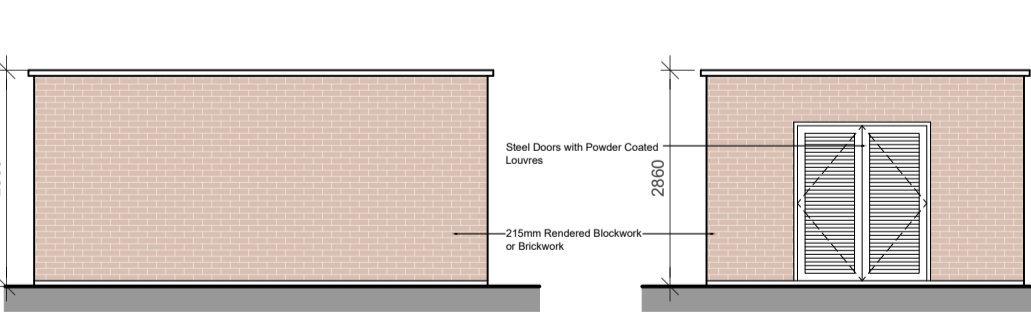
Rear Elevation

Side Elevation

DUPLEX BLOCK C EXTERNAL - BINS & BIKE STORE

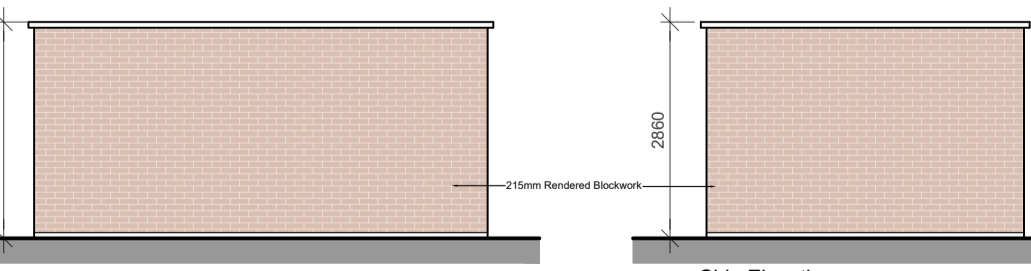


Bin Store Floor Plan



Front Elevation

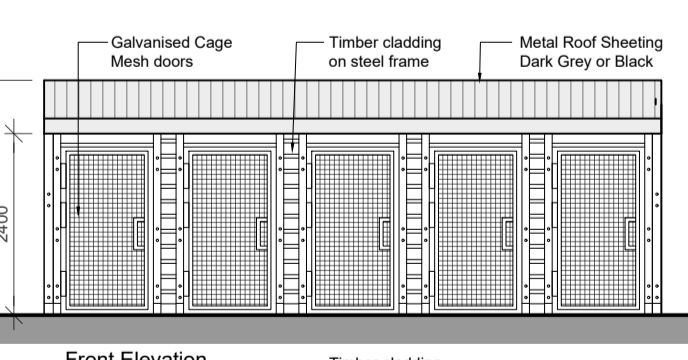
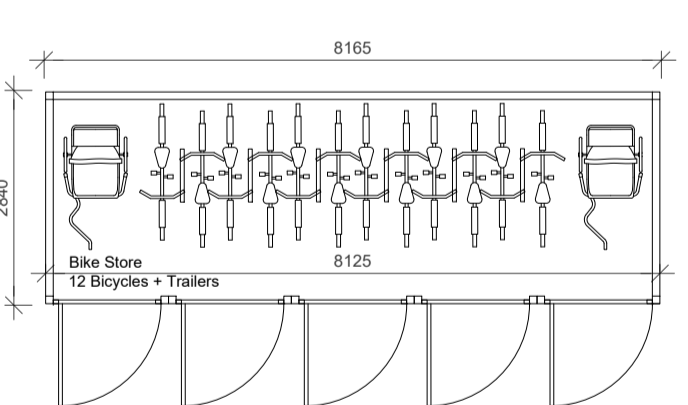
Side Elevation



Rear Elevation

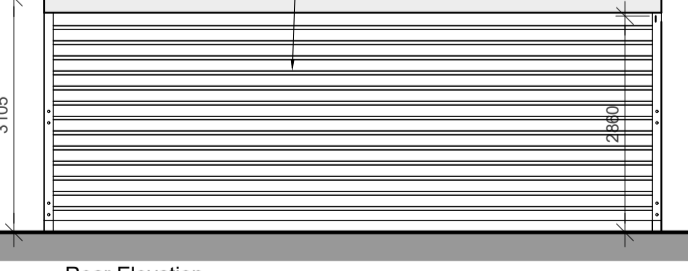
Side Elevation

DUPLEX BLOCK D EXTERNAL - BIN STORE



Front Elevation

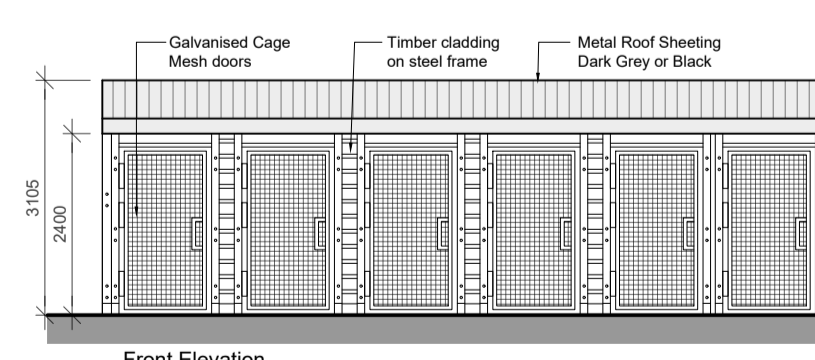
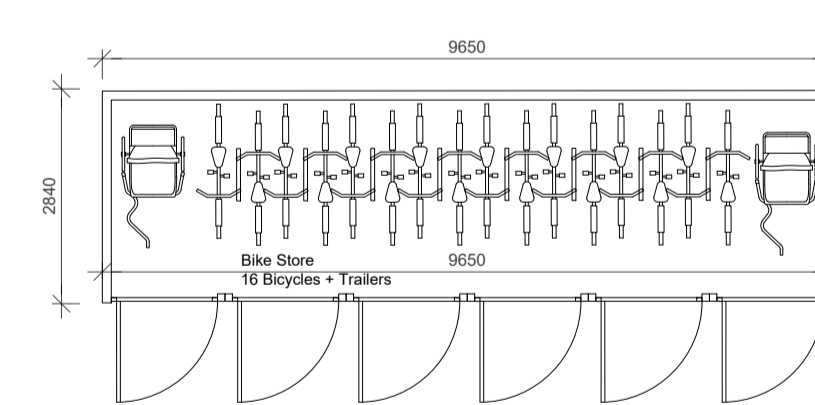
Side Elevation



Rear Elevation

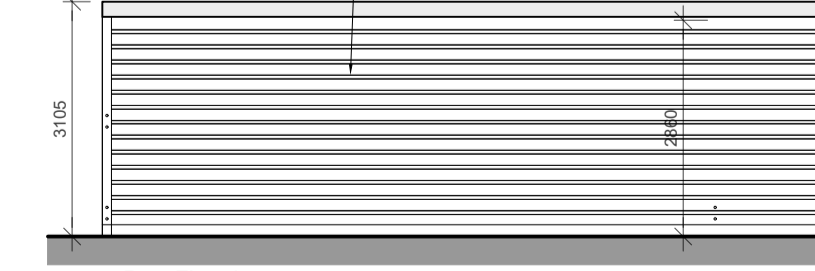
Side Elevation

DUPLEX BLOCK D EXTERNAL - BIKE STORE



Front Elevation

Side Elevation

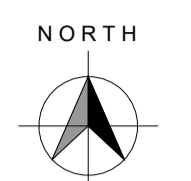


Rear Elevation

Side Elevation

DUPLEX BLOCK E EXTERNAL - BINS & BIKE STORE

- 1. This drawing is copyright
- 2. Do not scale the drawing
- 3. Errors and omissions to be immediately notified to Architect
- 4. All dimensions to be checked on site
- 5. To be read with relevant Engineers drawings



Refer to Site layout Plans for specific orientation and location of individual Bins and Bike Stores.

**External Finishes:**

**Roof:**  
Flat Paralon System – APP modified bitumen waterproofing, BBA certified with a life expectancy in excess of 30 years. Maintenance free granular surface.  
Thickness: 4.0 – 6.0mm (Paralon cap sheet only)  
System components: APP modified bitumen, polyester reinforced, granular or smooth finish  
Colours: Black, Green, Brown, Terracotta and White  
Uses: New-build and refurbishment roof waterproofing, Warm roofs, cold roofs, inverted roofs.  
Podium, Balcony and terrace waterproofing  
Certification: BBA certificate, FM Global

**Walls:**  
Painted render finish and/or selected facing brick

**Downpipes:**  
uPVC or aluminium

**Door:**  
High grade steel with powder-coated finish.

Refer to site layouts and individual apartment drawings for reference to external bin storage locations:

1736 Site Layout

For further details of individual waste allowances to particular residential blocks Refer to the Operational Waste Management Plan by Consultants,

revisions date ins

description

TYPICAL EXTERNAL BIN & BIKE STORE PLANS & ELEVATIONS

1736-SHD-B-100

revn

scale

1:100@A1

date

MAR '22

drawn

LD

checked

PG

job

Development at

Oldtown, Swords,

Co. Dublin

Phase 5

client

Gerard Gannon Properties

issue

Planning SHD Stage 3

CONROY CROWE KELLY

ARCHITECTS

65 MERRION SQUARE

DUBLIN 2

PHONE 6613990.1 FAX 6765715

E-MAIL info@ckk.ie